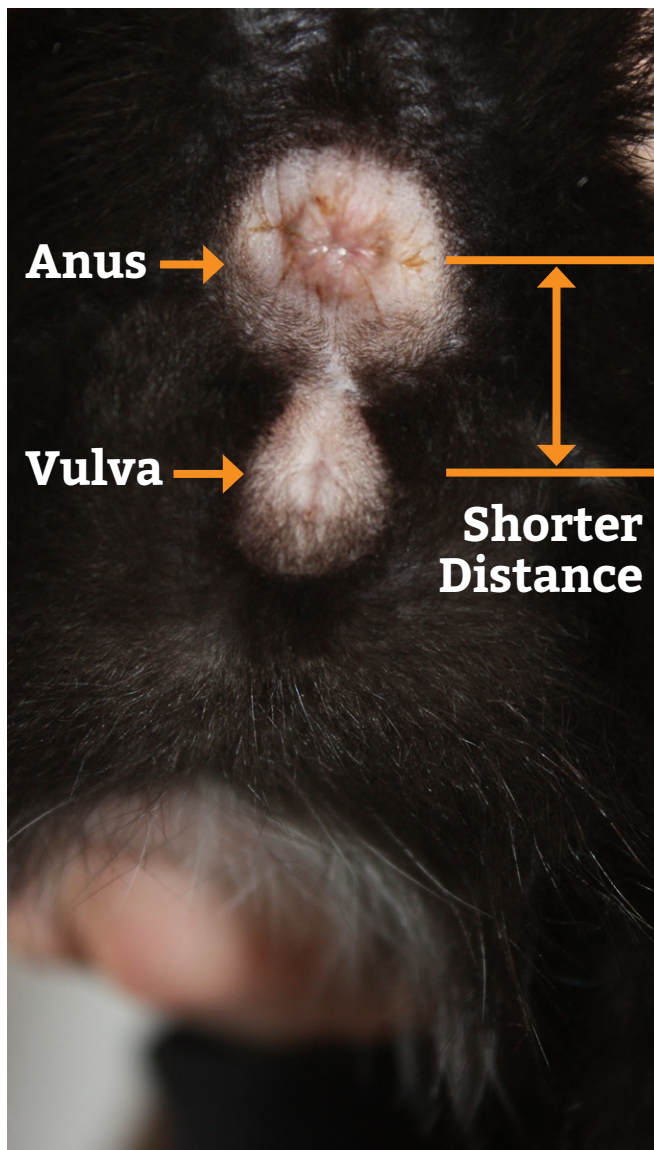


Is It a Male or Female Kitten?

It can be difficult to distinguish between male and female kittens, especially when they are just a few days old. The most reliable way is to look at the shape of the genital opening and the distance to the anus. When you have a litter of kittens, it can be particularly helpful to compare littermates.

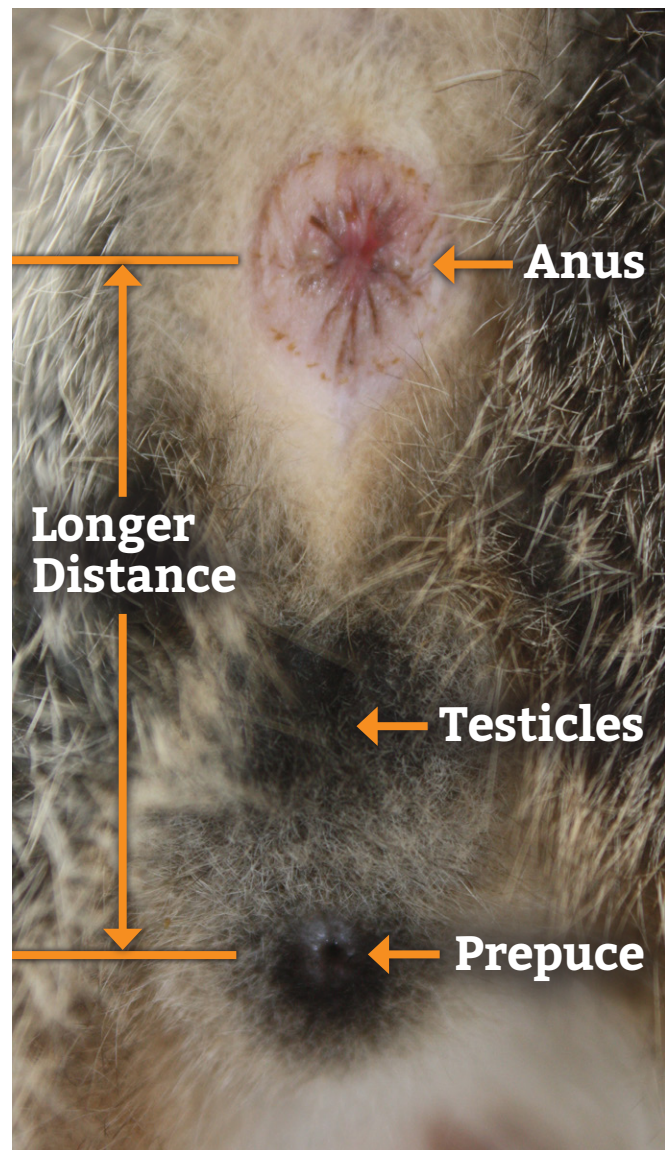
Females:

The genital opening appears as a vertical slit and is located directly below the anus.



Males:

The penis appears as a small round dot and is a greater distance from the anus, with the testicles located in between.



This distance guide can also be used for adult cats.